

DISTRIBUTION SOLUTIONS

Single-phase overhead distribution switches

Enhanced design for every application



Lightweight ABB switches provide ease and safety for transport and installation, as well as reliability over the product lifetime by not carrying current in the lower hinge.

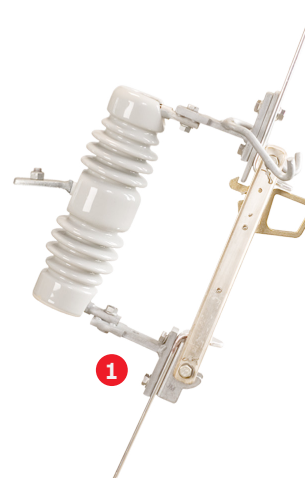
—
01 RBD distribution class bypass disconnect switch with bypass blade in the open position

Key product features

- Complete portfolio for distribution applications
- Lightweight design
- Lower hinge does not carry current
- Corrosion-resistant loadbreak hook
- RUS certified

Benefits

- Simple integration
 - Unlike traditional switches that are made of cast iron and very heavy, ABB switches are 20-40% lighter and easy for personnel to handle and install
 - Operating the switch with a hot stick is easier with a larger window design
 - With a small tab on the bottom of the switch, personnel can locate the hot stick at the bottom of the latch and push to close, eliminating the need to insert the hot stick on the internal profile
 - Full switch portfolio, including loadbreak options and cross arm frames for streamlined installation
- Unparalleled reliability
 - By not carrying current through the hinge, ABB switches eliminate hot spots for potential welding in hinges.
 - Advanced design ensures the switch will open as needed, even after significant exposure in highly contaminated environments.
 - Anti-corrosion materials ideal for the harshest environments



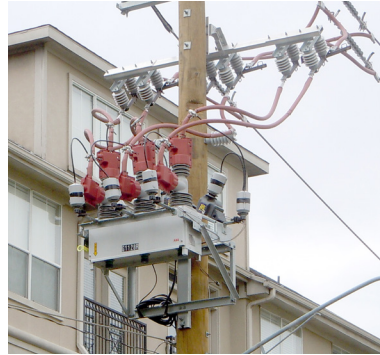
- ① By not carrying current through the lower hinge, ABB switches eliminate hot spots for potential welding in hinges.

- 01 Capacitor bank isolation
- 02 Recloser by-pass three-phase cross arm
- 03 Line isolation

Solutions



01


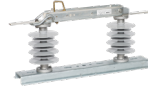





02



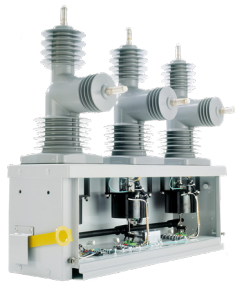
03

Technical data

Type		RBD	DCD	SID	LSID	ITD
						
Rated max voltage	kV	15/27/38	15/27/38	15/27/38	15/27	15/27/38
Rated continuous current	A	600/900	600/900	600/900	600*/900	600/900
Peak withstand current	kA	65	65	65	65	65
Rated lightning impulse withstand (BIL)	kV	110/125/150	110/125/150	110/125/150/170	110/125/150	150/200
Insulator material options		Silicone/porcelain	Silicone/porcelain	Silicone/porcelain/ polymer concrete	Silicone/porcelain/ polymer concrete	Silicone
Blade stop		No stop/90°/160°	No stop/90°/160°	No stop/90°/160°	No stop/90°/160°	60°/160°

* Loadbreaking current

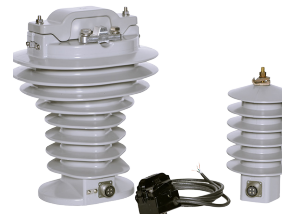
ABB offers a complete apparatus portfolio:



Three-phase GridShield®
recloser



Interchangeable cutout (ICX)



DistribuSense® sensors
(WLS-110, LVS, VLS-110)



Instrument transformers
(VOG-15R)

ABB Inc.
3022 NC 43 North
Pinetops, NC 27864
Phone: +1 252 827 3212

We reserve the right to make technical changes or modify the contents of this document without prior notice. With regard to purchase orders, the agreed particulars shall prevail. ABB AG does not accept any responsibility whatsoever for potential errors or possible lack of information in this document.

We reserve all rights in this document and in the subject matter and illustrations contained therein. Any reproduction, disclosure to third parties or utilization of its contents – in whole or in parts – is forbidden without prior written consent of ABB AG.
Copyright © 2019 ABB
All rights reserved